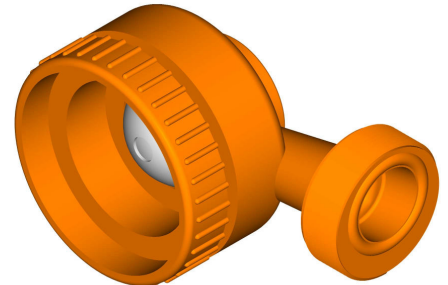


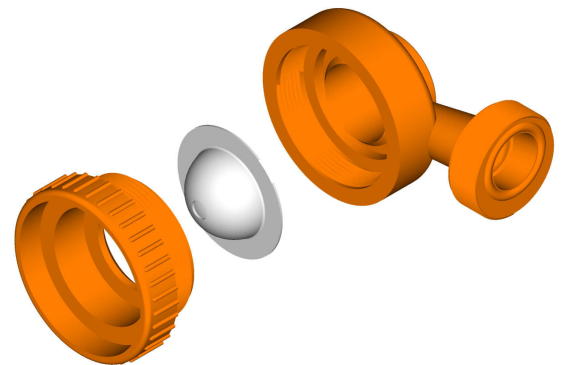
UNITECH-HL-spray nozzle

The spray nozzle type HL is constructed as centrifugal hollow-cone nozzle, selfcleaning and non-clogging with size 8mm mouth opening. The chassis is made of shatter resistant synthetic material resistant to a temperature up to 130°C. Nozzle-mouthpiece is made of stainless steel or titanium (depending on application)



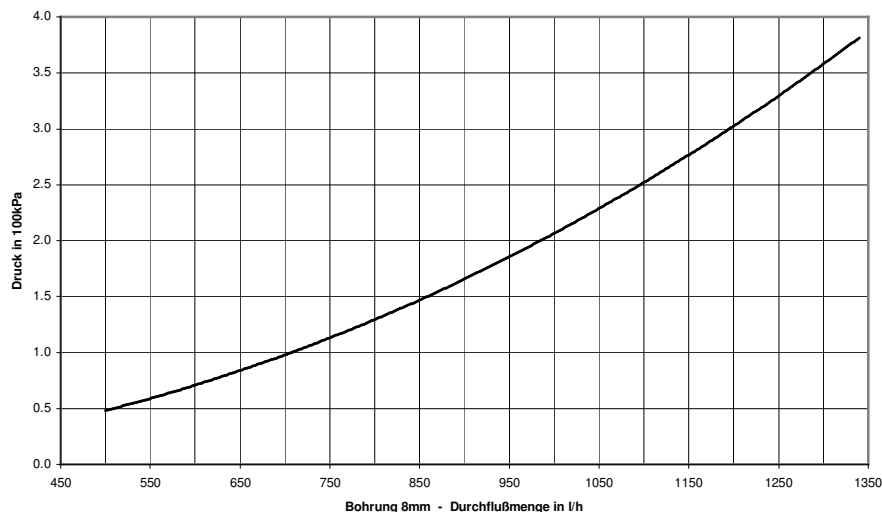
Advantages

- high waterflow
- selfcleaning
- non clogging
- fine water atomization
- steady atomization-cone even on high airspeeds
- spray-angle between 110° and 120°

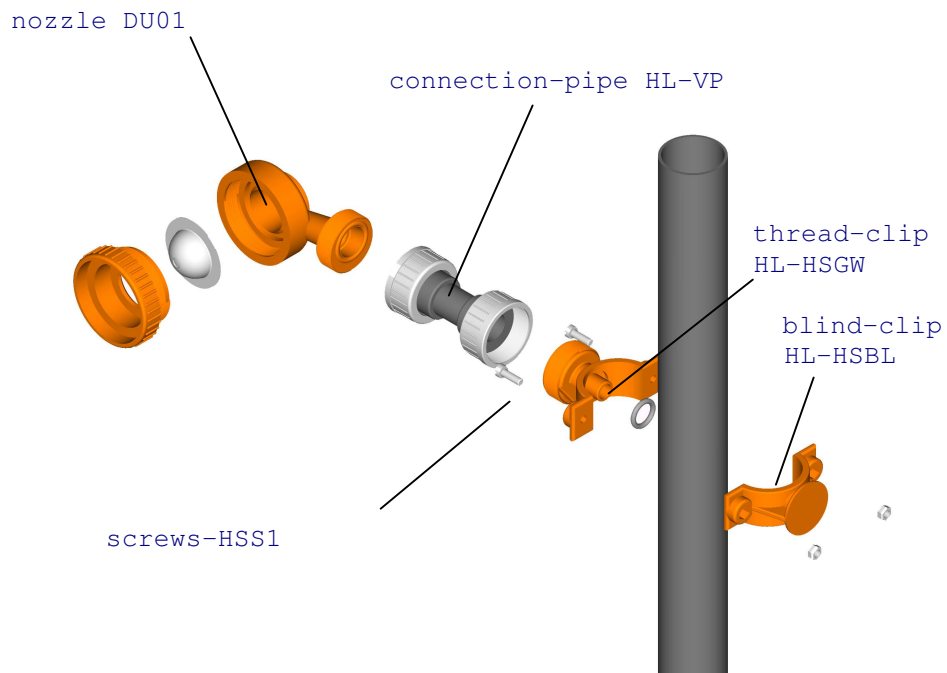


Patent DBP N. 2607335

Waterflow of HL-nozzles with mouth opening 8 mm



Nozzle-trees one sided



Nozzle-trees double sided

